

**SANUS®**

# Trillium

Style. **Built for Life.**

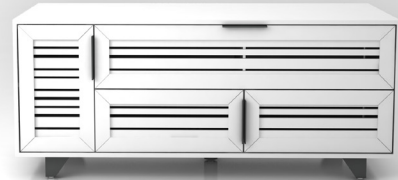


# Introducing **Trillium**

## Fine Media Furniture

With its trendy aesthetics and ability to support tons of gear, the SANUS **Trillium Collection** is the perfect combination of beauty and functionality. Our three Trillium Collection cabinets each make beautiful additions to any living room, bedroom or media room.

Features include ample storage space, integrated cable management, built-in ventilation and the ability to easily hide soundbars without affecting sound quality.





# You'll Love the Trillium Collection

The **Trillium Collection** is packed with features to help your media equipment perform to the best of its ability.

## ▲ **Designed for Today's AV Gear**

In today's world, we have a lot of media gear. We want our gear to operate well and look good in the process. This is exactly why the **Trillium Collection** is built to conceal soundbars, media players, and any number of other components without impacting performance. Cables can be neatly routed through numerous cable pathways, and hidden compartments keep smaller components like wireless routers out of sight, yet conveniently accessible.

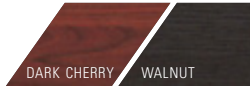
## ▲ **Easy Access to Components**

If you love to change out gear like we do, you will appreciate our AV-specific features. Removable back panels allow for simple wiring and easy access to all of your components. The side access panels provide hidden storage and easy access to devices like wireless routers, switchers and power strips.

## ▲ **Built-in Ventilation**

Venting on all internal shelves and doors with metal grills keep your gear cool for optimal performance, and ensures remote control signals will pass through without a hiccup.





# Trillium53

## 53" Media Cabinet — Supports flat-panel TVs up to 60"

Conceal a 40" soundbar and up to four AV components, plus a 60" flat-panel TV on this beautiful cabinet. The cabinet's deep, ventilated shelves keep components organized and cool for optimal performance. Available in dark cherry and walnut finishes.

52.6" W x 21" D x 22.5" H

### Large Soundbar Opening

Conceal a 40" soundbar or up to four media components, plus a 60" flat-panel TV on this beautiful media cabinet

#### Hidden Storage

Vented doors provide cooling while creating a greater level of concealment

#### Generous Storage

Side compartments are designed to store gaming systems, small components and DVDs

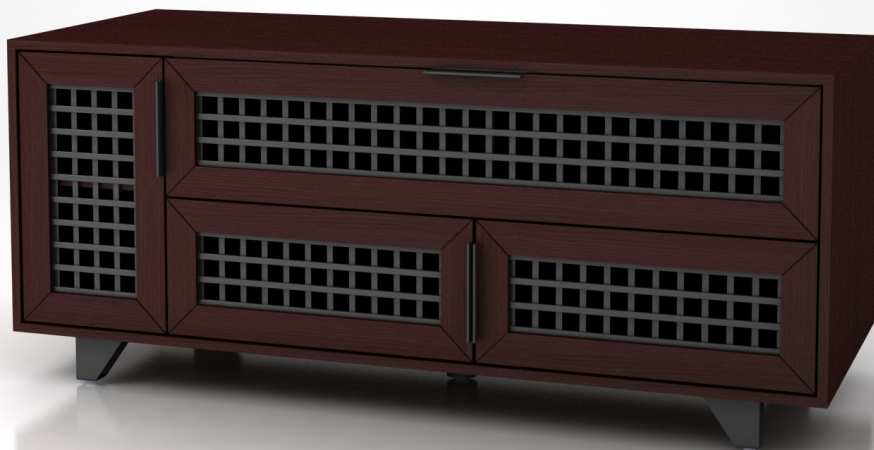
#### Symmetrical Design

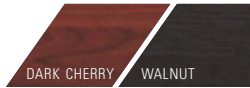
Functional AV cabinet features are wrapped into a stunning work of art

#### Unique Steel Panels

Door fronts do not disrupt IR signals and allow airflow through cabinet

Trillium53





# Trillium63

## 63" Media Console — Supports flat-panel TVs up to 70"

This extra wide console holds the largest media components, including flat-panel TVs up to 70". The metal grill doors provide a safe barrier from pets and children while complementing the components they protect. The grills are open enough to provide ample cooling, allowing IR signals to pass through along with hiding soundbars and speakers without affecting sound quality.

63" W x 21" D x 22.5" H

### Large Soundbar Opening

40" opening designed to fit most soundbars

#### Hidden Storage

Vented doors provide cooling while creating a greater level of concealment

#### Generous Storage

Side compartments are designed to store gaming systems, small components and DVDs

#### Asymmetrical Design

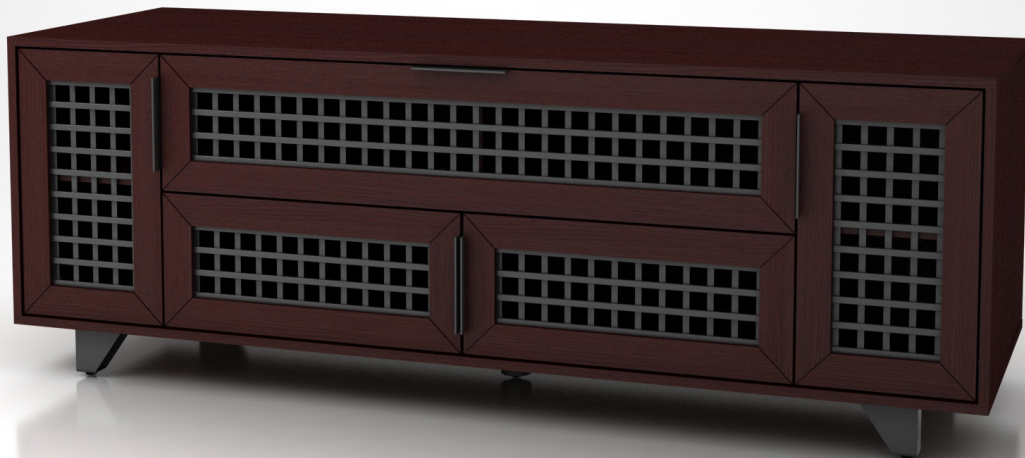
Trendy design offers a refreshing new look for showrooms

#### Unique Steel Panels

Door fronts do not disrupt IR signals and allow airflow through cabinet



# Trillium63



ANTIQUÉ WHITE

# Juniper53

## 53" Media Console — Supports Flat-panel TVs up to 60"

Compatible with TVs up to 60", the Juniper53 features a beautiful, warm coastal-inspired design that complements any room, from a beach house to a sleek metropolitan home.

52.6" W x 21" D x 22.5" H

### Convertible Storage

Large, versatile storage space conceals soundbars up to 40" wide or two additional components

#### Unique Front Panels

Door fronts do not disrupt IR signals and allow airflow through cabinet

#### Hidden Storage

Vented doors provide cooling while creating a greater level of concealment

#### Unique Style

Warm, coastal inspired design fits perfectly in a beach house or a sleek metropolitan home

#### Horizontal Slats

Horizontal layering design is a fusion of nature and industrial elements

# Juniper53



TECHNOLOGY  
INTEGRATOR  
**EXC!TE**  
2013 Winner



## Trillium53

### 53" Media Cabinet

Supports flat-panel TVs up to 60"



## Trillium63

### 63" Media Cabinet

Supports flat-panel TVs up to 70"



## Juniper53

### 53" Media Cabinet

Supports flat-panel TVs up to 60"

Hidden compartment storage  
Vented doors and shelves  
Enhanced cable management  
Hides components and soundbars

**SANUS**<sup>®</sup>

sanus.com | info@sanus.com | Phone: 800-359-5520

©2013 Milestone AV Technologies. All Rights Reserved.  
SANUS is a Milestone brand. SANUS and the SANUS logo are registered  
trademarks of Milestone. US and foreign patents pending.